

Shut Off Water to Exterior Faucet/Tap/Hose Bib

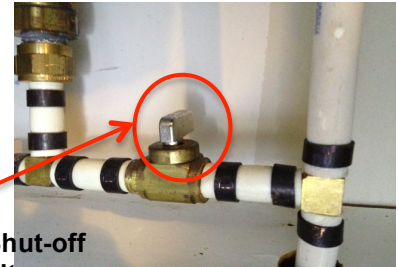
In very cold weather, water pipes to your outside faucets may freeze and crack. To reduce the possibility of this occurring, the water supply to your outside faucet should be turned off in the Fall.

FIRST, Locate the shut-off valve and turn to closed position, which will turn off the water flow.

Aggregate Patio: the shut-off valve for the faucet/tap/hose bib at the back of your unit is located under the kitchen sink.



OPEN POSITION: Shut-off valve handle in same direction as pipe.



CLOSED POSITION: Shut-off valve handle in opposite direction of pipe.

Garage Door: the shut-off valve for the faucet/tap/hose bib near the garage door at the front of your unit is located under the upstairs bathroom sink.



OPEN POSITION: Shut-off valve handle in same direction as pipe.



CLOSED POSITION: Shut-off valve handle in opposite direction of pipe.

NEXT, drain the water out of the pipes by opening each of the outside faucets. Once the water is completely drained, then turn the faucet to closed.

Turn handle counter clockwise to open tap and drain the water from the pipes. Then turn opposite direction to close.



AND FINALLY, in the Spring, the water can be turned back on by simply turning the shut-off valves under the kitchen and upstairs bathroom sink to the open position.